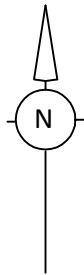


SCALE: NTS

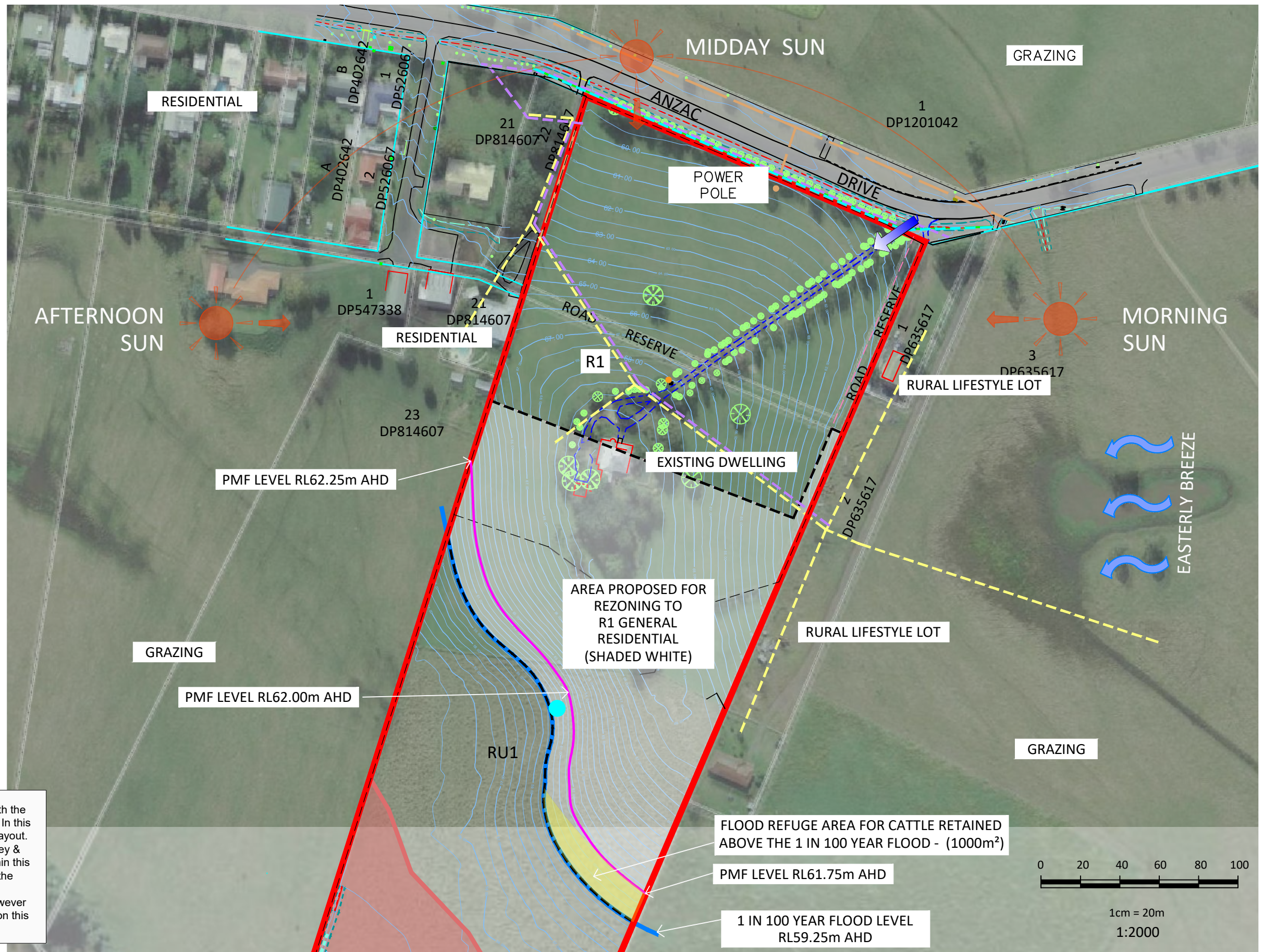


LEGEND

- SITE BOUNDARY
- CONTOURS
- EXISTING VEGETATION
(BY SURVEY & LPMA SIX VIEWER)
- REGIONALLY SIGNIFICANT FARMLAND
SOURCE: NORTHERN RIVERS FARMLAND PROTECTION PROJECT FUND MAP 2005 (MAP 1 OF 4)
- GROUND WATER BORE
SOURCE: WATER NSW
(REALTIMEDATA.WATER.NSW.COM.AU)
- NBN
- TELSTRA POWER POLE
SOURCE: DBYD
- ELECTRICITY POWER POLE FENCE
- WATER
SOURCE: DETAIL SURVEY
- EXISTING ACCESS POINT AND DRIVEWAY

NOTE:

This preliminary layout has been completed in accordance with the instructions provided by Roseberry Creek Developments P/L. In this respect preliminary desktop data has been used to form this layout. The final layout is subject to the completion of a detailed survey & engineering plans. Accordingly, the conclusions reached within this report may be modified by the author upon the completion of the final design plans & site inspection. Newton Denny Chapelle accepts no responsibility for any loss or damage suffered, however so arising, to any person or corporation who may use or rely on this report.



REV	DATE	AMENDMENT
A	31.08.21	
B	05.10.21	BDY, NOTES
C	11.10.22	PMF level added
D	08.03.23	CATTLE REFUGE ADDED

SOURCE PLAN: www.maps.six.nsw.gov.au - accessed 5.11.14

k:\jobs\2020\200397 - roseberry creek developments\planning\planning plans\200397 - roseberry creek\rezoning\20397 - roseberry creek developments rezoning - rev d.dwg - plan 4 - site analysis

Newton Denny Chapelle
Surveyors Planners Engineers
Email: office@ndc.com.au
31 Carrington St Lismore 2480
PH: 6622 1011
ABN: 18 094 689 845

PLAN 4 - SITE ANALYSIS

CLIENT: ROSEBERRY CREEK DEVELOPMENTS P/L

LOCATION: LOT 1 DP307050
45 ANZAC DRIVE
GENEVA NSW

DATE: 05.10.21
SCALE: 1:2000 @ A3
REF: 200397-01-PL-AS-04_B
DRAWN: bk